

Issued by Vickie L. Grimm
Williams County Auditor

Citizens of Williams County:

I am pleased to present the Williams County Citizens Annual Financial Report for the fiscal year ended December 31, 2018. The report provides a brief analysis of where County revenues come from and where those dollars are spent, as well as an overview of trends in the local economy. Above all, it is designed to present a more easily understandable financial report.



Information in this report has been taken from the 2018 Williams County Cash Basis Financial Report. The Cash Basis Financial Report was audited by the Auditor of State of Ohio

The Citizens Annual Financial Report, which has been generated internally by the Williams County Auditor's Office, summarizes the financial activities of the primary government of Williams County. The reports and statements contained in the Citizens Annual Financial Report condense and simplify

our 2018 Cash Basis Financial Report for all Williams County funds and account groups. The Citizens Annual Financial Report does not conform to Generally Accepted Accounting Principals (GAAP) and governmental reporting standards.

The Citizens Annual Financial Report of Williams County is presented as a means of increasing public confidence in County government and its elected officials through easier, more user-friendly financial reporting. As you review our Citizens Annual Financial Report, I invite you to share any questions, concerns or recommendations you may have.

Sincerely,

Vickie L. Grimm
Williams County Auditor



Licensing

Licenses for dogs, kennels, vendors, and cigarettes are all issued by the County Auditor's office. Williams County issued 6,310 dog licenses in 2018. Vendor licenses authorize businesses to sell tangible property to the public and collect sales tax, of which one and a half percent is returned to the County for use on the local level.

WILLIAMS COUNTY OFFICES



Department of Aging - Bryan Senior Center



Hillside Country Living



Engineer's Office

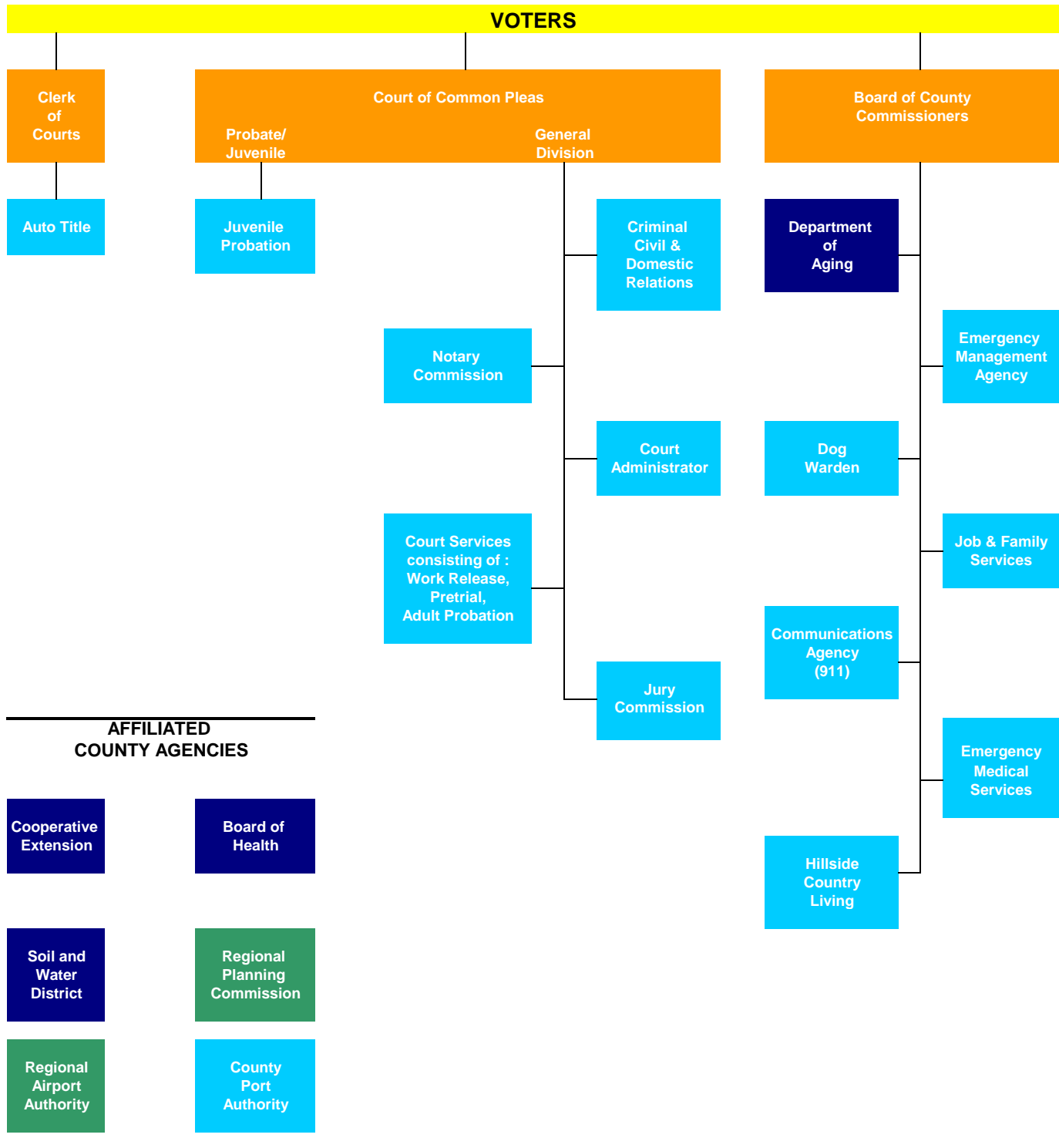


Title Office/North Annex



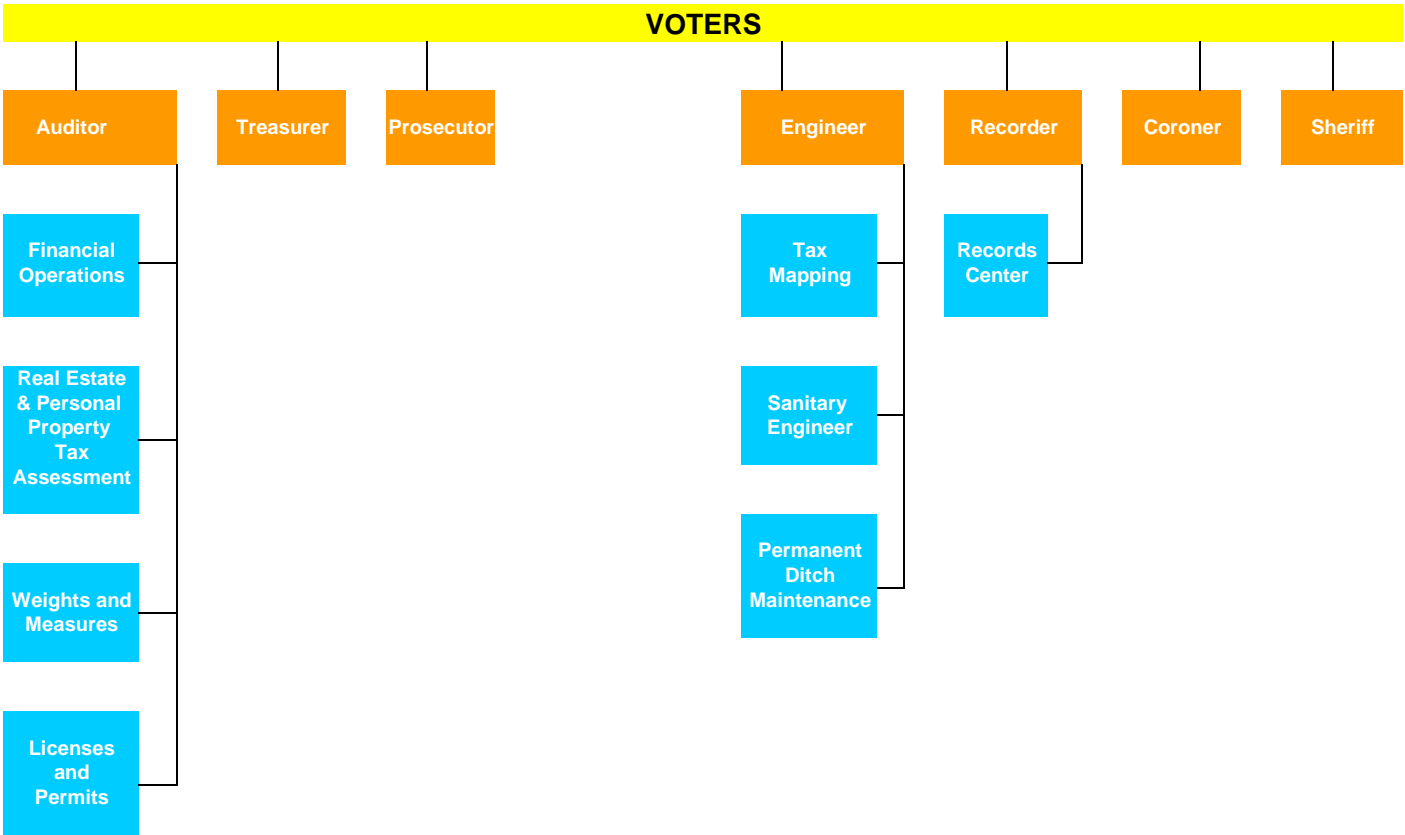
EMS Office

Your Williams County Government



KEY

- Voted levy provides some or all of the funding
- County provides some or all of the funding
- Elected Officials
- Administrative Jurisdiction



COUNTY COMMISSIONS

Northwest Ohio Rail Commission	County Budget Commission	Board of Revision	Data Processing Board	County Records Commission	Veterans Service Commission	Williams County Board of Elections
Appointed By: Board of Commissioners	Includes: Auditor Treasurer Prosecutor	Includes: Auditor Treasurer Pres of Board of Comm.	Includes: Auditor Treasurer Commissioner Recorder Clerk of Courts Records Center	Includes: Auditor Recorder Prosecutor Clerk of Courts Pres. Of Board of Commissioners	Appointed By: Common Pleas Court Judges	Appointed By: Democratic Party Republican Party Secretary of State

COUNTY BOARDS

Alcohol, Drug Addiction and
Mental Health Services

Williams County Board of
Developmental Disabilities

A Brief History of Williams County

Williams County was formed in 1820 from Old Indian Territory and organized in 1824 with Defiance as its county seat. In 1840, the county seat was relocated to the newly created town of Bryan, a more central location. The County is named after David Williams, a Revolutionary War hero, and one of the captors of Major Andre, the British Spy.

County Government

The elected three-member Board of Commissioners acts as both legislative and executive branch of County Government. Each Commissioner serves a four year term. In addition to the County Auditor who serves as chief fiscal officer, there are seven other elected officials, serving four year terms, who operate separately as set forth by Ohio Revised Code. These officials are: Clerk of Courts, Coroner, Engineer, Prosecuting Attorney, Recorder, Sheriff, and Treasurer. Williams County elects three Judges, one serving Common Pleas Court, another serving Probate/Juvenile Court, and the third serving Municipal Court. Each Judge serves a six year term.

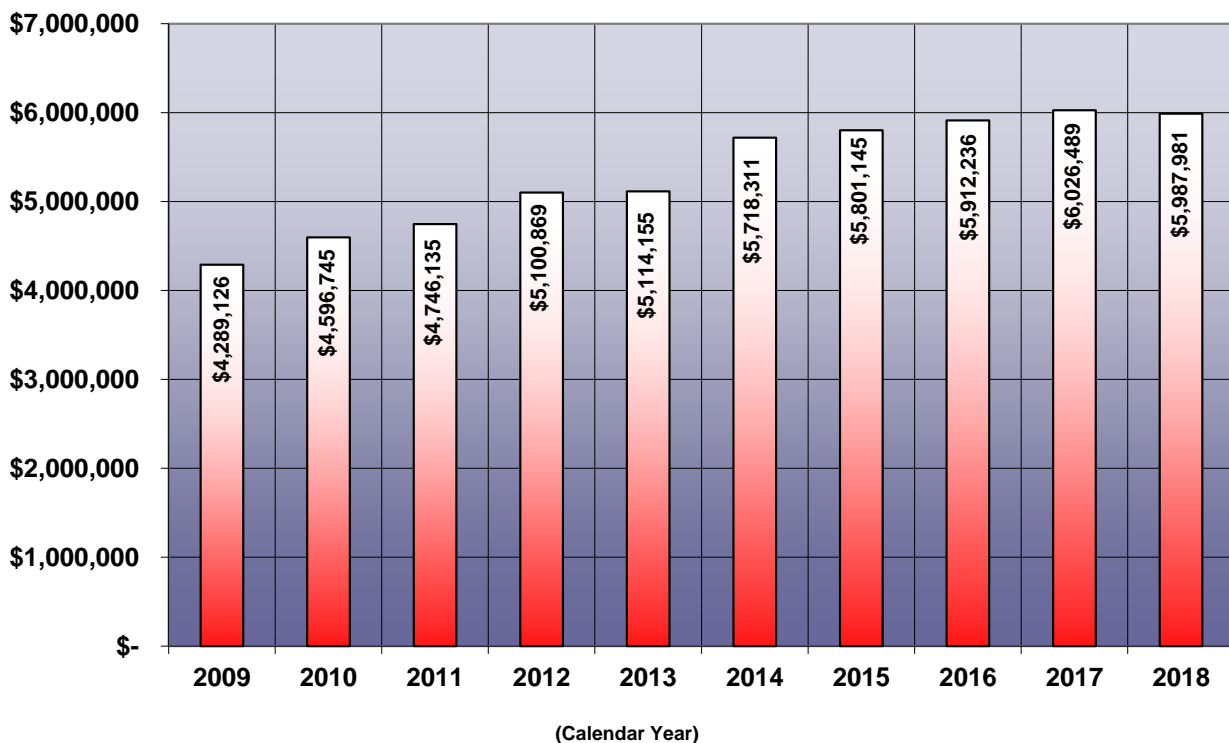
Williams County Unemployment Rate Remains Steady in 2018

The County's unemployment rate for 2018 averaged 3.6% as compared to a state average of 4.6% and a national average of 3.9%. In 2017, the county's unemployment rate was at 4.4% as compared to a state average of 5.0% and national average of 4.4%. Over the past ten years, the county's unemployment rate has ranged from a low of 3.6% in 2018 to 15.7% in 2009.

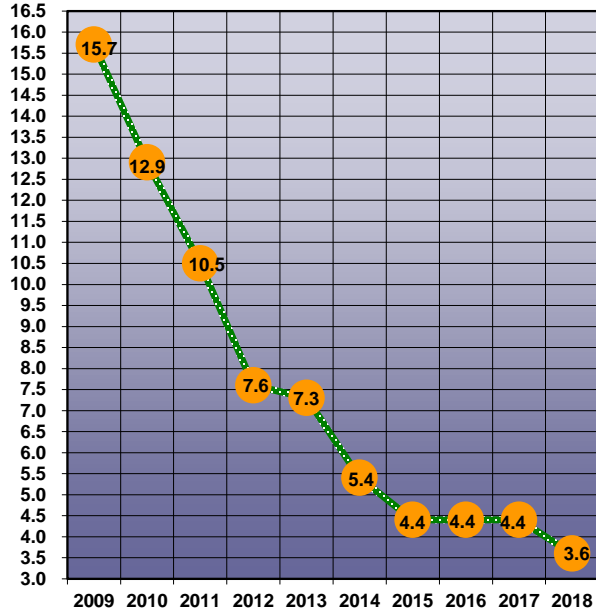
Economic Statistics

- Sales tax revenue for Williams County in 2018 totaled \$5,987,981 as compared to \$6,026,489 in 2017. This represents an decrease of \$38,508 or .64%.
- Real Property values have increased 18.26% over the past five years. From 2017 to 2018, values increased by 2.24%
- Real & Personal Property tax collections have increased by 26.06% over the past five years. Property tax collections in 2018 increased by \$1,132,402 or 3.04% as compared to 2017.

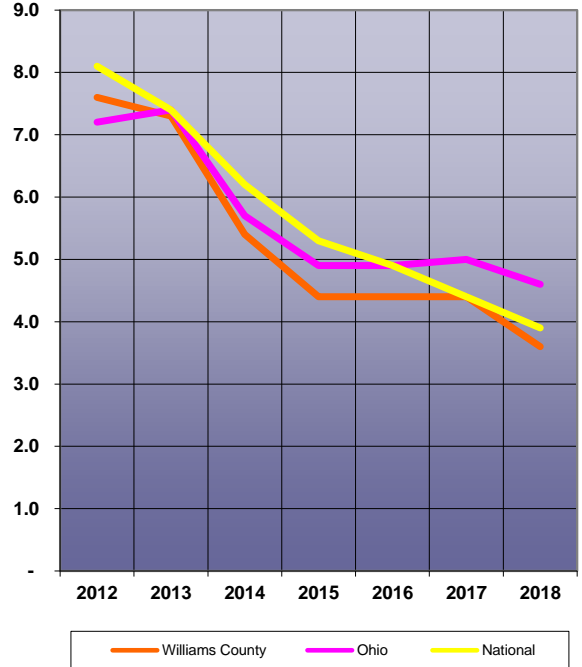
Williams County Sales Tax Revenue



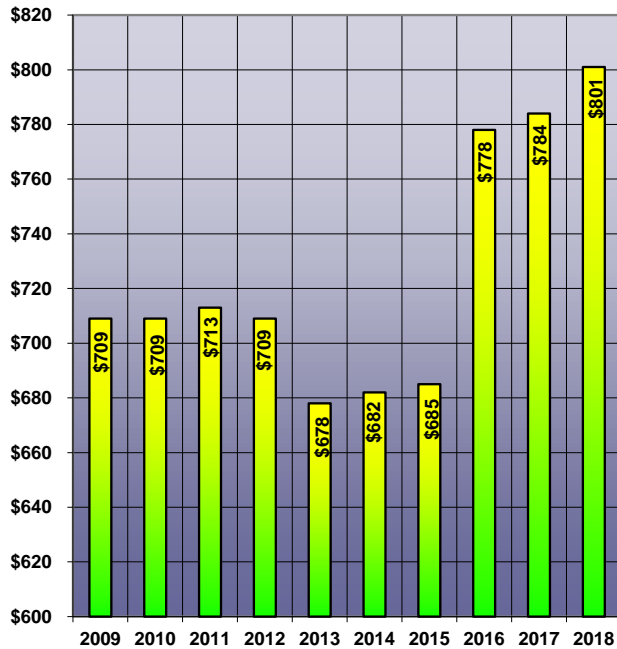
**Williams County
Average Unemployment Rates**



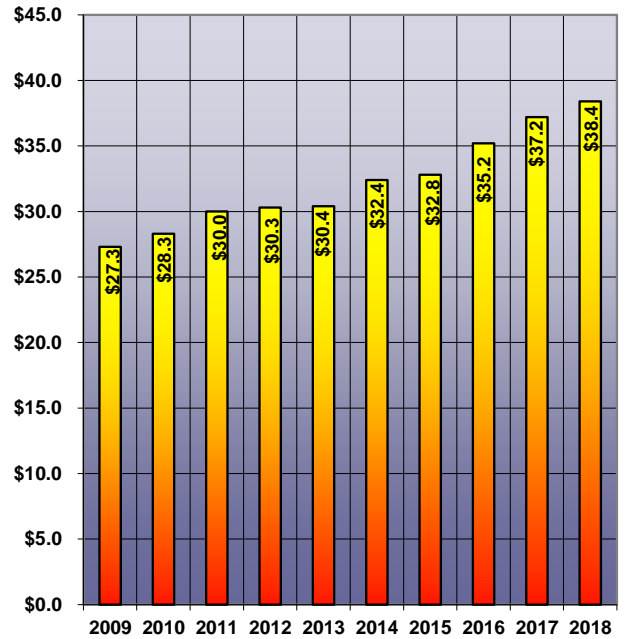
**National, State and County
Unemployment Rates**



**Assessed Taxable Property Values
(in millions)**



**Real & Personal Property Tax Collections
(in millions)**



County General Fund Expenditure Statement

General Fund Expenditures

	2016	2017	2018
Auditor	163,169	164,486	176,978
Auditor-Weights & Measures	13,678	13,454	12,839
Bureau of Inspections	51,410	51,311	51,332
Commissioners	245,617	251,761	268,055
Courthouse	729,582	554,325	549,679
Custodial/Maintenance	0	68,596	63,544
Elections Board	254,611	203,368	239,205
Information Technologies	53,040	109,611	120,362
Miscellaneous	41,392	33,540	30,994
Planning Commission	108	135	0
Prosecutor	383,000	417,472	433,503
Records Center	104,213	89,960	75,772
Recorder	110,344	116,011	117,820
Taxes/Other	76,792	99,055	85,257
Treasurer	123,491	128,883	134,641
Total Legislative & Executive	2,350,447	2,301,968	2,359,981
Adult Probation	97,748	102,268	103,830
Clerk of Courts	171,191	178,222	180,437
Common Pleas Court	253,631	231,845	262,377
Court of Appeals	18,253	19,231	17,042
Jury Commission	948	1,126	1,130
Juvenile Probation	472,949	485,260	516,466
Miscellaneous	12,258	9,783	11,166
Municipal Court	112,648	116,329	127,998
Probate Court	110,951	107,156	113,219
Total Judicial	1,250,577	1,251,220	1,333,665
Communications Agency	487,489	501,068	523,460
Coroner	64,591	80,753	96,596
Courthouse Security	82,283	96,686	114,170
Emergency Management	79,714	84,789	160,334
Sheriff	1,395,748	1,488,398	1,587,834
Miscellaneous	1,735,788	1,823,317	1,805,201
Total Public Safety	3,845,613	4,075,011	4,287,595
Engineer-Ditches	267,465	85,818	77,303
Engineer-Office Expense	139,623	150,000	80,000
Mapping Department	37,358	39,408	40,732
Miscellaneous	1,137	8	1,039
Total Public Works	445,583	275,234	199,074
Health	86,930	65,272	94,261
Total Health	86,930	65,272	94,261
Children's Services	450,000	450,000	500,000
Public Assistance	61,763	51,169	63,675
Veteran Services	7,100	6,200	5,600
Veteran Services Commission	374,047	368,848	351,506
Total Human Services	892,910	876,217	920,781
Employee Health Insurance	1,076,369	1,190,944	1,291,589
Total Employee Health Insurance	1,076,369	1,190,944	1,291,589
Grant - Park Board	2,000	3,000	7,000
Total Conservation & Recreation	2,000	3,000	7,000
WEDCO	100,574	124,688	225,463
Total Economic Development	100,574	124,688	225,463
Agriculture	3,300	3,300	10,300
Airport	56,000	56,000	78,554
Miscellaneous	37,893	46,855	57,775
Total Other /Miscellaneous	97,193	106,155	146,629
Principal	14,388	15,042	15,914
Interest	6,005	5,430	4,828
Total Debt	20,393	20,472	20,742
Total Expenditures	\$10,168,589	\$10,290,181	\$10,886,780

Financial Activity Statement

Summary

The Financial Activity Statement, known in accounting terms as the "Income Statement," provides a record of the money received and spent during the year. Explanations of specific Resources and Services are provided on the following pages.

Williams County 2018 Financial Activity Statement of Governmental Funds	
Resources Received	
Property Taxes	\$5,217,157
Sales Tax	5,987,981
Charge for Services	5,799,185
Licenses & Permits	154,951
Fines & Forfeitures	263,084
Intergovernmental Revenue	15,701,861
Special Assessments	670,331
Investment Income	308,934
Miscellaneous	976,212
Total	\$35,079,696
Total Net Other Financing	(42,179)
Total Resources Received	\$35,037,517
Services Rendered	
Legislative & Executive	3,249,699
Judicial	3,542,608
Public Safety	4,528,232
Public Works	5,405,181
Health	1,732,131
Human Services	10,149,473
Conservation & Recreation	7,000
Economic Dev. & Assistance	1,168,353
Employee Health Insurance	1,291,589
Other/Miscellaneous	148,981
Capital Outlay	786,917
Debt Service	1,606,329
Total Services Rendered	\$33,616,493
Resources Received over Services Rendered	\$1,421,024

Resources

Resources received are monies the County receives from a variety of sources in order to pay for the Services it provides.

Taxes are resources that include sales tax, real estate tax, and a variety of other smaller taxes.

Charge for Services are resources from various County departments and agencies for fees paid to them by the public such as court costs and fees for the recording of deeds and transferring property.

Licenses & Permits are revenues from the selling of vendor licenses, dog licenses and other items.

Fines & Forfeitures are the resources derived from fines levied in the Courts and money received from a variety of forfeitures, including drug arrests and seized property.

Intergovernmental Revenues are resources received from direct grants and funding from the State of Ohio and Federal Government.

Special Assessments are amounts levied on real estate tax bills by the County and other local governments for providing improvements such as ditches, water and sewer services, curbs and lighting.

Investment Income is the earnings of the County Treasurer's investments.

Miscellaneous Revenues include refunds, reimbursements, proceeds from notes and donations.

Services Rendered

Services rendered are the monies expended to provide services to citizens.

Legislative & Executive expenditures are the expenses incurred for administrative offices including the Auditor, Commissioners, Prosecutor, Recorder, Treasurer and other similar departments.

Judicial expenditures are the costs of administering justice through the Williams County Courts, which include the Courts of Common Pleas, Probate, Juvenile and Domestic Relations.

Public Safety expenditures are the costs of the Coroner and Sheriff Department.

Public Works expenditures are the costs incurred to maintain County roads and bridges.

Health expenditures are those services to maintain public health.

Human Services expenses are the costs to operate the Department of Job & Family Services and the Children Services Board.

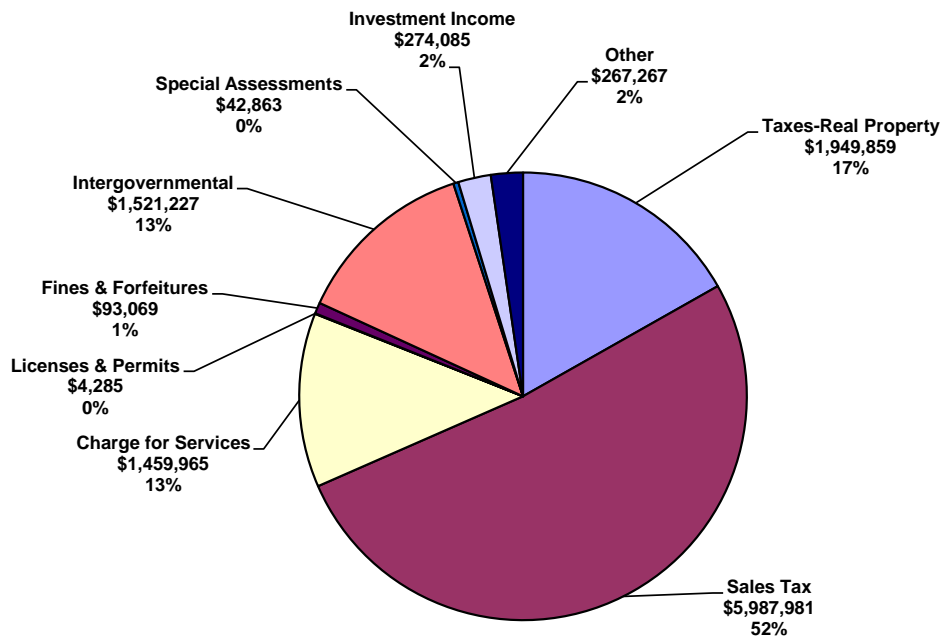
Economic Development & Assistance expenditures are primarily from Community Development Block Grants (CDBG) provided to local business, government, and home owners to promote development in Williams County.

Employee Health Insurance expenditures are the costs to provide insurance coverage for medical and dental benefits to the employees of the County.

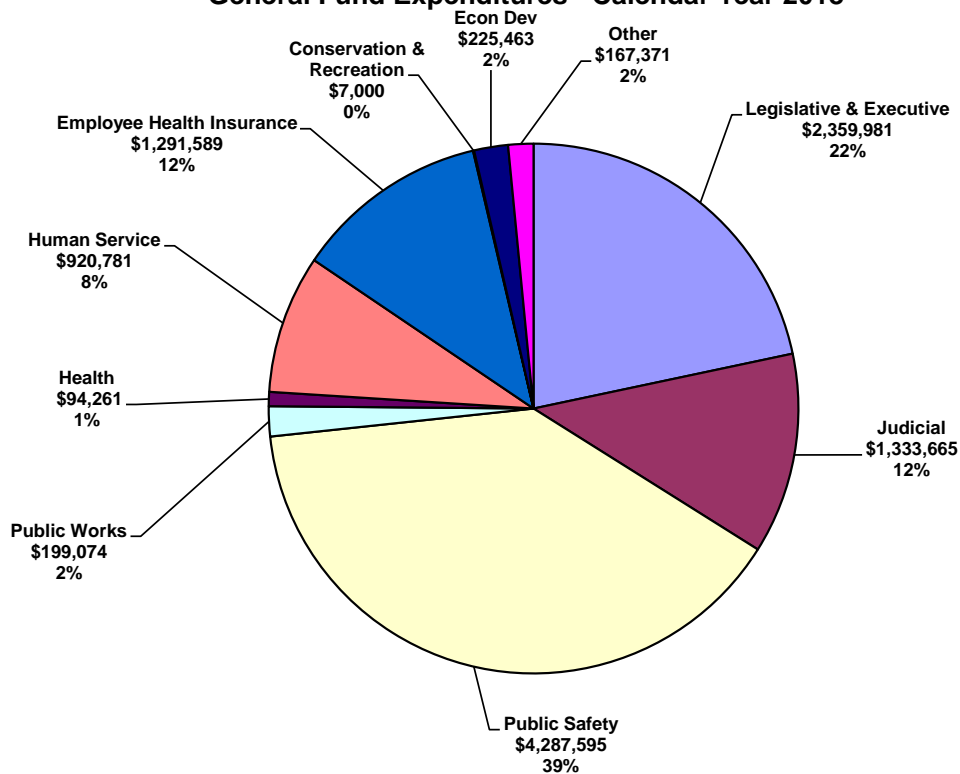
Capital Outlay are expenditures for the purchase, acquisition and construction of improvements to County buildings, land, equipment, and vehicles.

Debt Service expenditures are the costs of paying interest and principal on County Debt.

General Fund Revenues - Calendar Year 2018



General Fund Expenditures - Calendar Year 2018



Williams County 2018 Summary of Debt Obligations

	Balance at 1/01/18	Additions	Reductions	Balance at 12/31/18
General Obligations	\$1,500,000	\$0	\$1,000,000	500,000
USDA Special Assessment	622,914	0	20,145	602,769
USDA Revenue Bonds	4,267,278	0	230,929	4,036,349
OPWC Loans	91,878	0	13,782	78,096
OWDA Loans	2,284,034	0	349,721	1,934,313
Court of Appeals Loan	107,038	0	15,914	91,124
Total	\$8,873,142	\$0	\$1,630,491	\$7,242,651

**Year 2010 Census Information
Townships and Villages within Williams County**

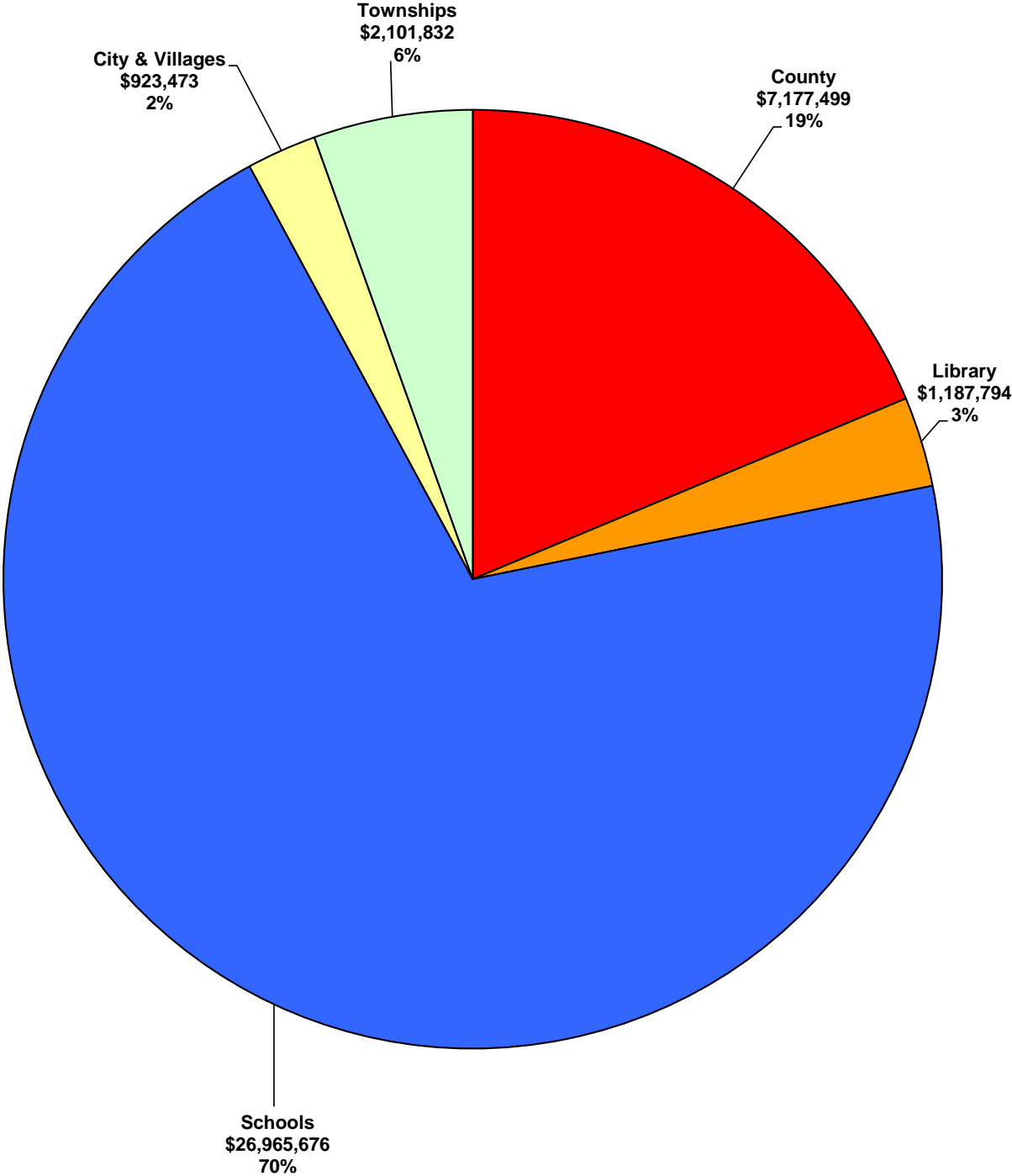
	Population		Population
Alvordton Village	0	Madison Township	987
Blakeslee Village	96	Millcreek Township	802
Brady Township	931	Montpelier Ex. Village	4,072
Bridgewater Township	1,474	Northwest Township	1,236
Bryan City	8,545	Pioneer Village	1,380
Center Township	2,874	Pulaski Township	2,357
Edgerton Village	2,012	Springfield Township	1,812
Edon Village	834	St. Joseph Township	815
Florence Township	1,096	Stryker Village	1,335
Holiday City Village	52	Superior Township	1,393
Jefferson Township	1,868	West Unity Village	1,671
		County Total	<u>37,642</u>

Source: U.S. Census Bureau Website

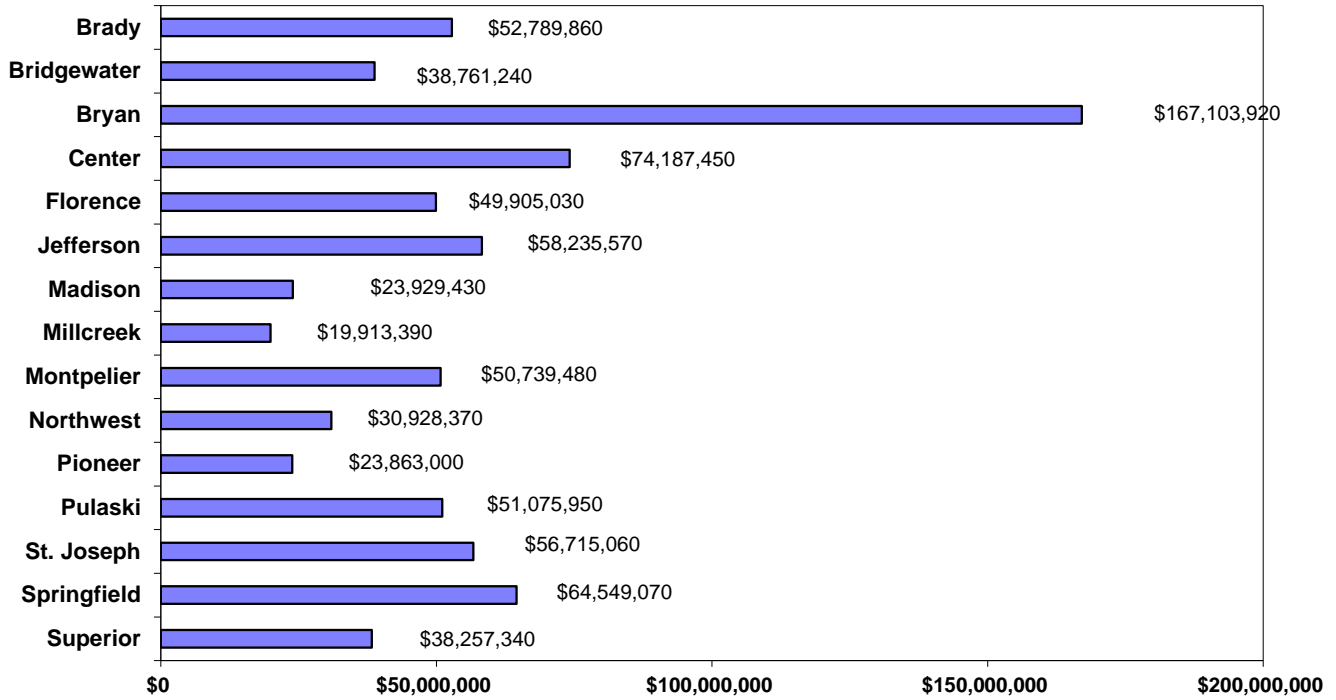
Note: Village populations are not included in township figures.



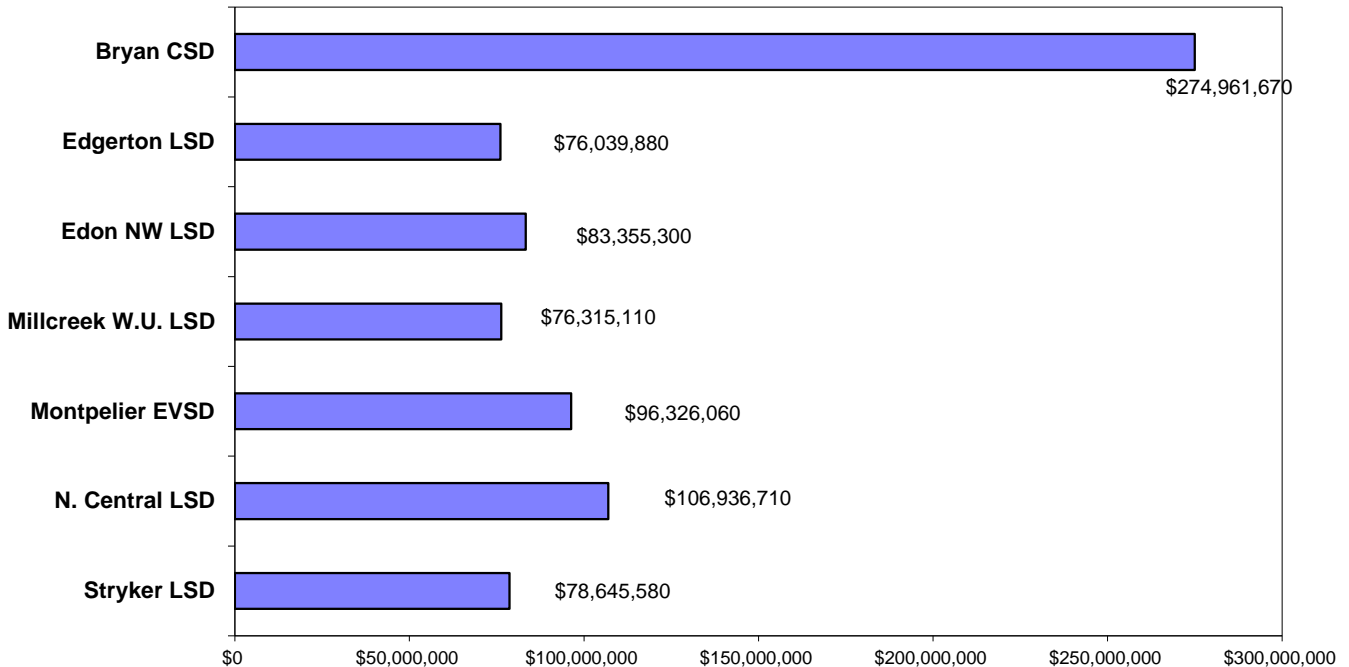
Real Estate Tax Revenue - Calendar Year 2018



Williams County Township Valuations - Tax Year 2018



Williams County School District Valuations - Tax Year 2018



Williams County Elected Officials

A faded background image of the Williams County Courthouse, a large, ornate brick building with a prominent clock tower and multiple gables, surrounded by green trees.

Vickie L. Grimm
Auditor

Kimberly L. Herman
Clerk of Courts

Dr. Kevin Park
Coroner

Brian A. Davis
Commissioner

Lewis D. Hilkert
Commissioner

Terry N. Rummel
Commissioner

J. T. Stelzer
Common Pleas Court Judge

Todd J. Roth
Engineer

Steven R. Bird
Probate and Juvenile Judge

Katherine J. Zartman
Prosecutor

Patti Rockey
Recorder

Steven M. Towns
Sheriff

Kellie J. Gray
Treasurer

Williams County Office Directory

<u>Department</u>	<u>Phone Number</u>	<u>Fax Number</u>
Adult Probation	636-4722	636-8532
Auditor	636-5639	636-8584
Clerk of Courts	636-1551	636-7877
Commissioners	636-2059	636-0643
Common Pleas Court	636-2644	636-9886
Communications Agency	636-8497	636-3170
Department of Aging	633-4317	633-4319
Dog Warden	636-4659	636-3170
Election Board	636-1854	636-2975
E.M.S.	636-6751	636-0554
Engineer	636-2454	636-8687
Enrichment Center	485-8331	485-5495
Health Department – Bryan – Satellite Office	636-8754	636-8107
Health Department – Montpelier – Main Office	485-3141	485-5420
Hillside Country Living	636-4508	636-1269
Job & Family Services	636-6725	636-8843
Juvenile Probation	636-2934	636-3200
Planning Commission	636-2454	636-8687
Probate Court	636-1548	636-5405
Prosecutor	636-4411	630-0354
Recorder	636-3259	636-6940
Record's Department	636-8253	636-3984
Sheriff	636-3151	636-2935
Soil & Water	636-9395	636-8645
Title Department	636-1915	636-1861
Tax Mapping	636-2454	636-8687
Treasurer	636-1850	636-8584
Veterans Commission	636-8812	636-7306
Victim's Assistance	636-6195	636-0481



I would like to thank you for taking the time to read about the financial activity in Williams County. It is our goal in the Auditor's Office to continue serving the citizens of Williams County in a professional and friendly manner, as well as being a responsible public servant.

Vickie L. Grimm
Williams County Auditor

Questions, comments or suggestions regarding this report can be directed to the County Auditor's Office at (419) 636-5639. This report, a variety of other information, as well as e-mail capabilities can be found at the County's web-site at: www.co.williams.oh.us/auditor